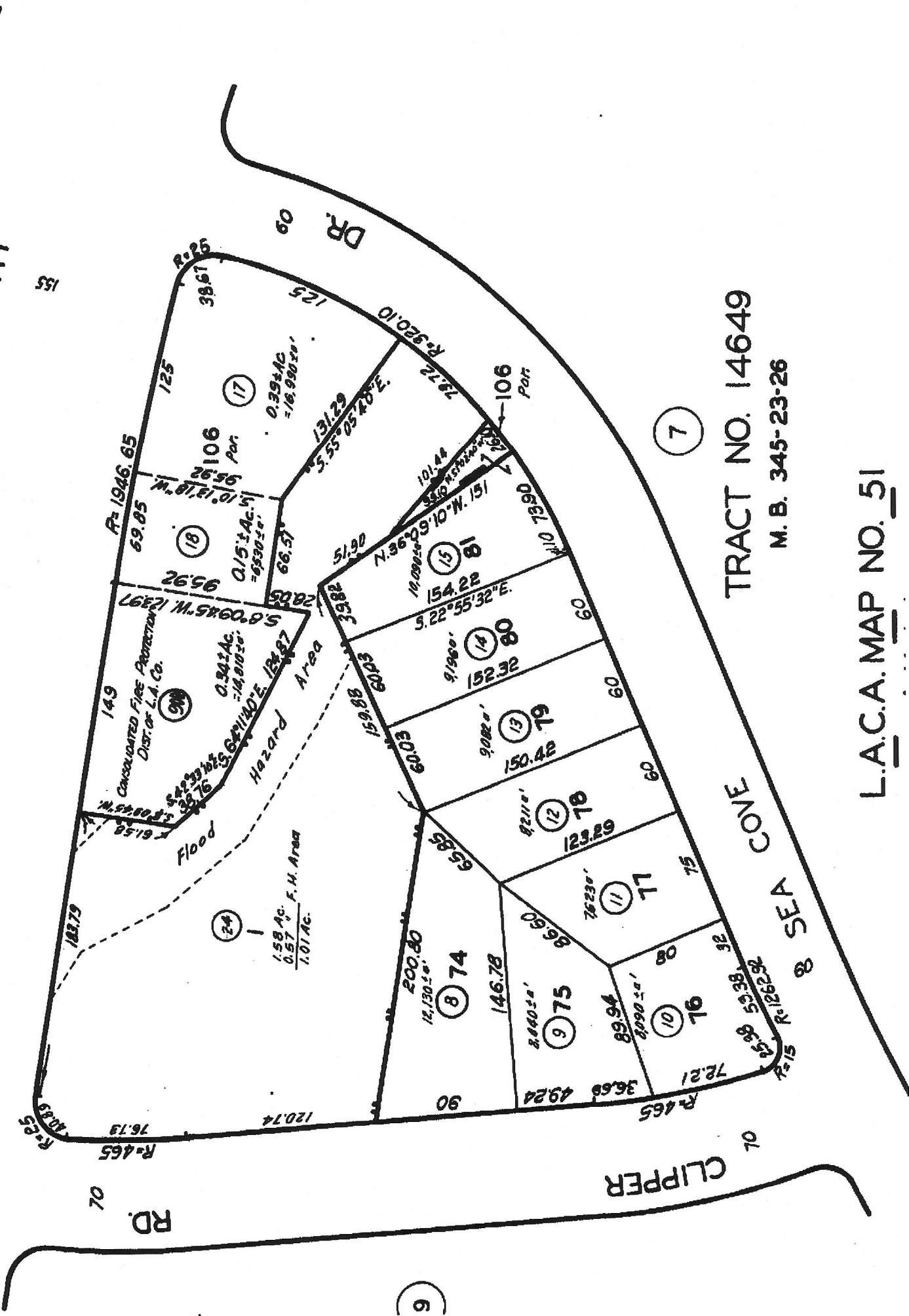


DRIVE SOUTH

160
155
150
155
160
165
170



TRACT NO. 14649

M. B. 345-23-26

7

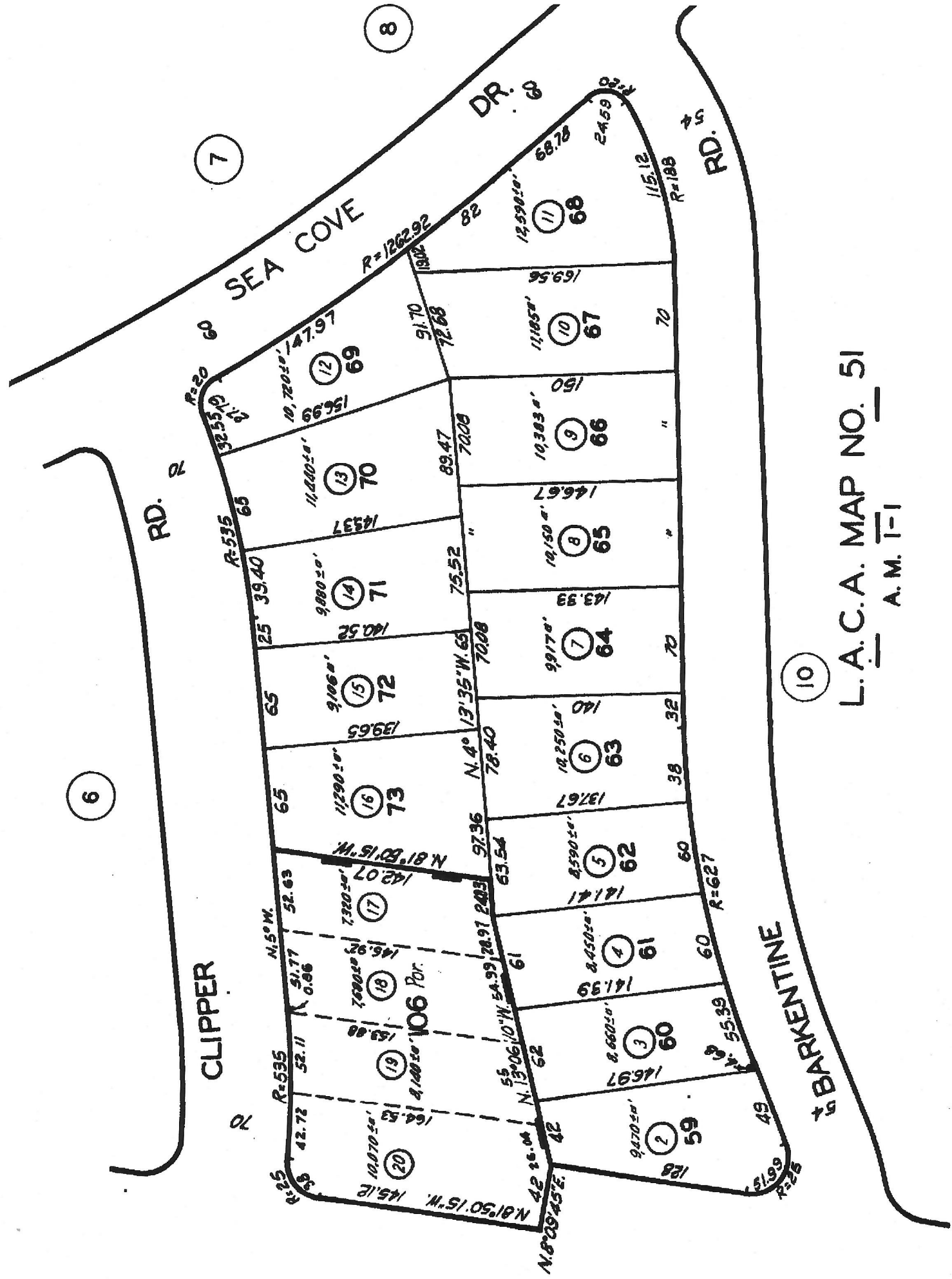
L.A.C.A. MAP NO. 51

CLIPPER

RD.

SEA COVE

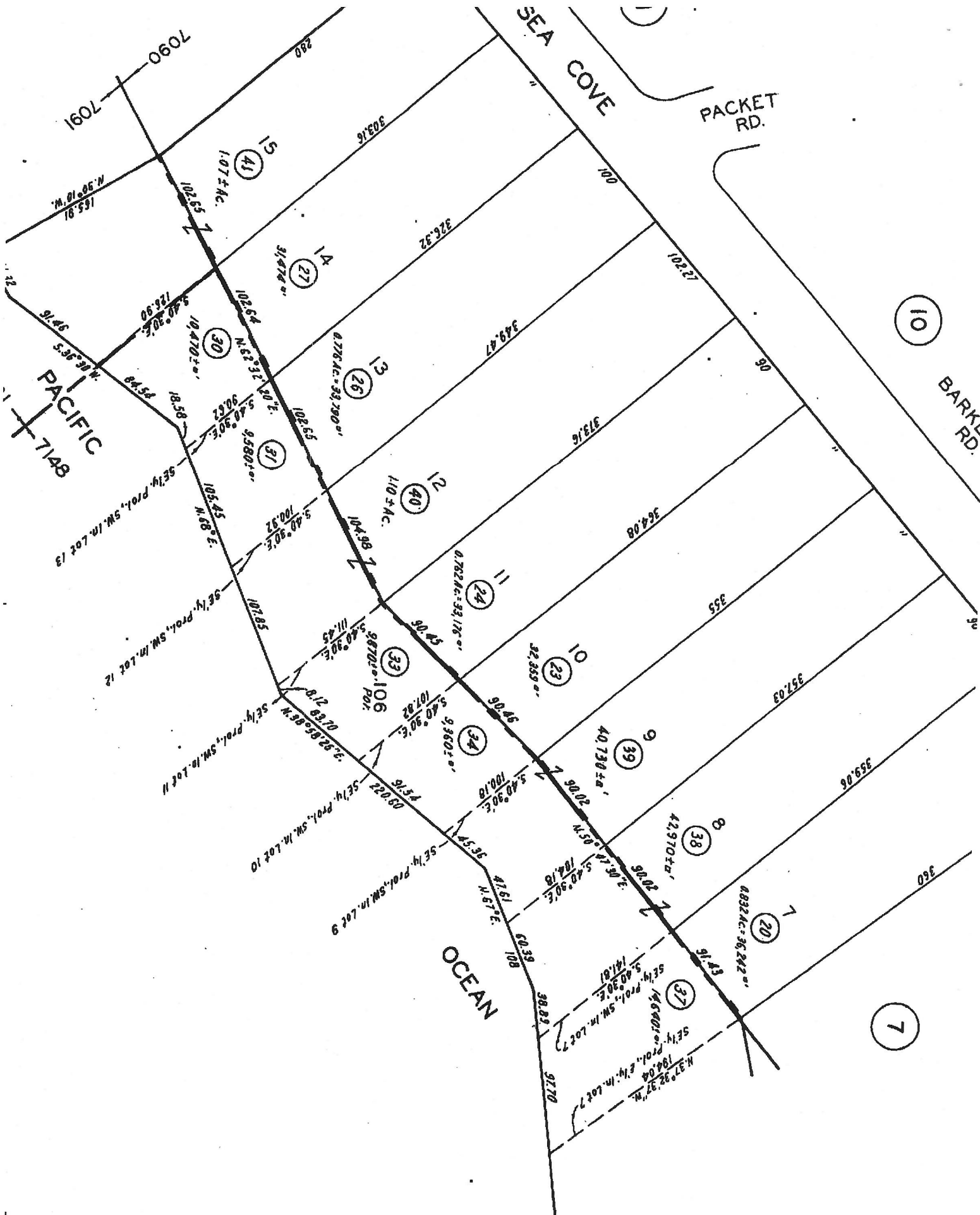
9



L.A.C.A. MAP NO. 51

A.M. T-1

TRACT NO. 14040



10

BARKLE RD.

7

SEA COVE

PACKET RD.

PACIFIC
7148

OCEAN

15
1.07±Ac.

14
31,978"

13
8,776 Ac. ± 33,700"

12
110±Ac.

11
4,762 Ac. ± 33,176"

10
32,339"

9
40,738±Ac.

8
42,970±Ac.

7
4,832 Ac. ± 36,242"

37
14,640±Ac. ± 14,640"

36
194,604±Ac. ± 194,604"

7090
7091

303.16

326.32

349.47

373.16

364.08

355

357.03

359.06

360

155.81
N. 50° 18' W.

126.50
S. 40° 30' E.

19,470±"

9,580±"

100.97
S. 40° 30' E.

111.45
S. 40° 30' E.

107.82
S. 40° 30' E.

100.18
S. 40° 30' E.

104.18
S. 40° 30' E.

141.81
S. 40° 30' E.

141.81
S. 40° 30' E.

184.64
S. 40° 30' E.

92.70
N. 37° 32' 37" W.

64.52
S. 35° 33' W.

185.88
SE 1/4 Procl. SW 1/4 in Lot 13

105.45
N. 68° E.

107.85
SE 1/4 Procl. SW 1/4 in Lot 12

8.12
SE 1/4 Procl. SW 1/4 in Lot 11

09.22
SE 1/4 Procl. SW 1/4 in Lot 10

36.57
SE 1/4 Procl. SW 1/4 in Lot 9

41.91
N. 37° E.

92.39
108

38.83
92.70

102.55

102.54
N. 53° 32' 40" E.

102.55

104.88

90.46

90.46

90.46

90.46

90.46

90.46

90.46

90.46

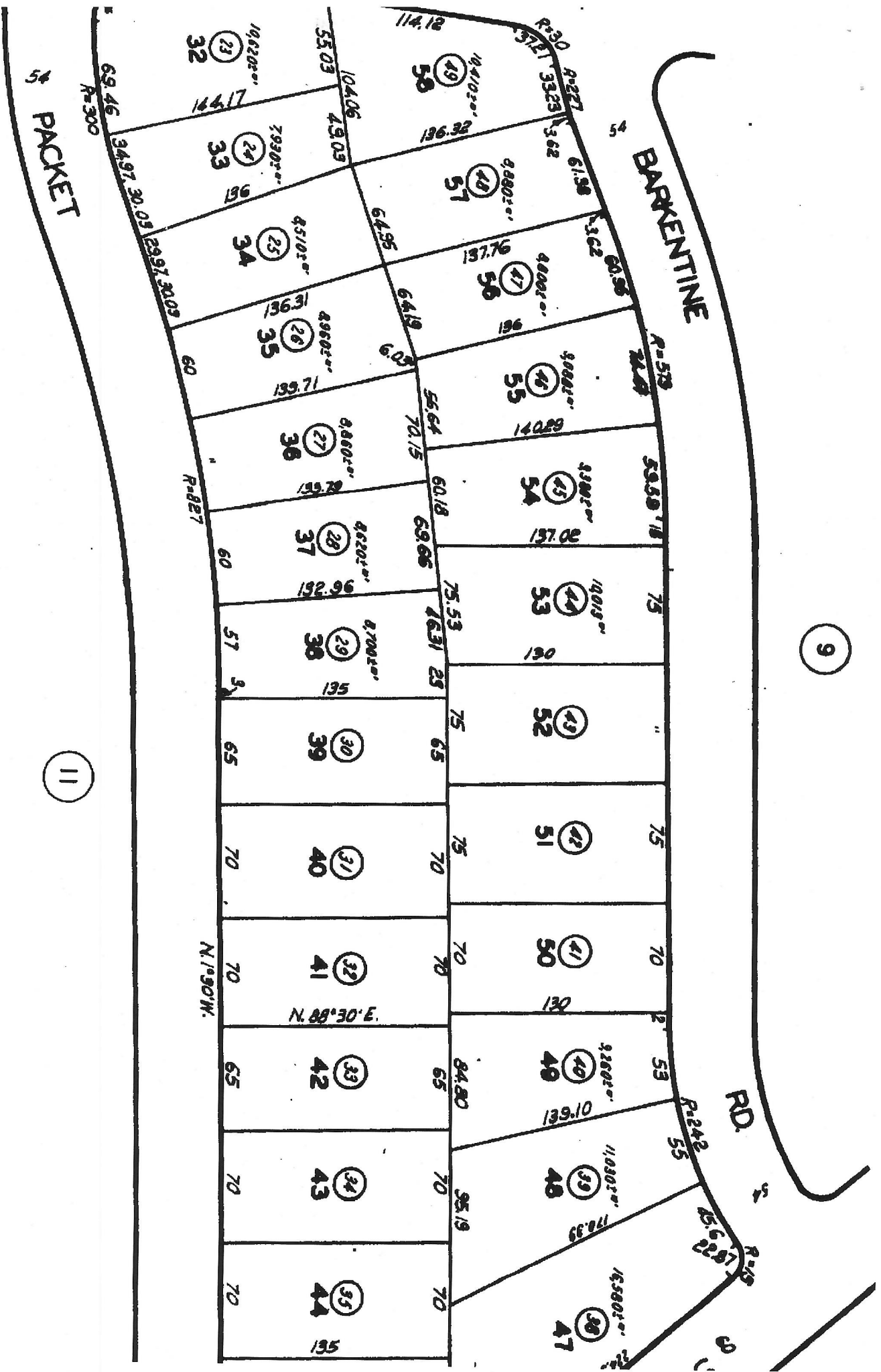
90.46

90.46

90.46

90.46

90.46



54
PACKET

BARKENTINE
RD.

9

11

N. 1°30' W.

N. 89°30' E.

R-227

R-300

R-300
R-227

R-519

R-242

R-15

60

60

60

57

65

70

70

65

70

70

60

60

57

65

70

70

65

70

70

60

60

60

57

65

70

70

65

70

70

60

60

57

65

70

70

65

70

70

60

60

60

57

65

70

70

65

70

70

60

60

57

65

70

70

65

70

70

60

60

60

57

65

70

70

65

70

70

60

60

57

65

70

70

65

70

70

60

60

60

57

65

70

70

65

70

70

60

60

57

65

70

70

65

70

70

60

60

60

57

65

70

70

65

70

70

60

60

57

65

70

70

65

70

70

60

60

60

57

65

70

70

65

70

70

60

60

57

65

70

70

65

70

70

60

60

60

57

65

70

70

65

70

70

60

60

57

65

70

70

65

70

70

60

60

60

57

65

70

70

65

70

70

60

60

57

65

70

70

65

70

70

60

60

60

57

65

70

70

65

70

70

60

60

57

65

70

70

65

70

70

60

60

60

57

65

70

70

65

70

70

60

60

57

65

70

70

65

70

70

60

60

60

57

65

70

70

65

70

70

60

60

57

65

70

70

65

70

70

60

60

60

57

65

70

70

65

70

70

60

60

57

65

70

70

65

70

70

60

60

60

57

65

70

70

65

70

70

60

60

57

65

70

70

65

70

70

60

60

60

57

65

70

70

65

70

70

60

60

57

65

70

70

65

70

70

60

60

60

57

65

70

70

PACKET

16	13/602°	41.03	33.12	135
17	98302°	81.58	134.74	98302°
18	10/4502°	53.20	128.06	10/4502°
19	10/062°	70.12	141.66	99702°
20	10/354°	70.12	150	10/409°
21	10/409°	70.05	147.41	10/228°
22	10/228°	70.05	144.81	9/315°
23	9/315°	65.04	142.41	9/178°
24	9/178°	65.04	91.78	10/3902°
25	10/3902°	68.34	150.56	10/3501°
26	10/3501°	68.31	154.66	10/4202°
27	10/4202°	64.08	152.51	10/1201°
28	10/1201°	62.31	74.08	9/9302°
29	9/9302°	74.08	134.74	9/702°
30	9/702°	128.47	32.04	50.53

13

10

12

RD. 2

