



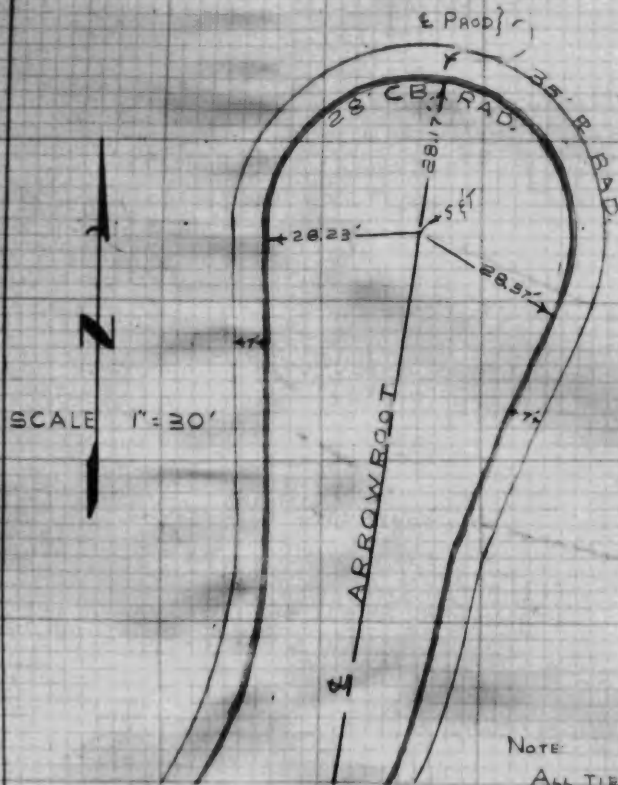
W.S. 277.5-5

# TRACT 23434

## ARROWROOT LN. CUL-DE-SAC

DATE: FEB 1958

PARTY CH: D Yost  
ENGINEERING  
SERVICE CO. P.



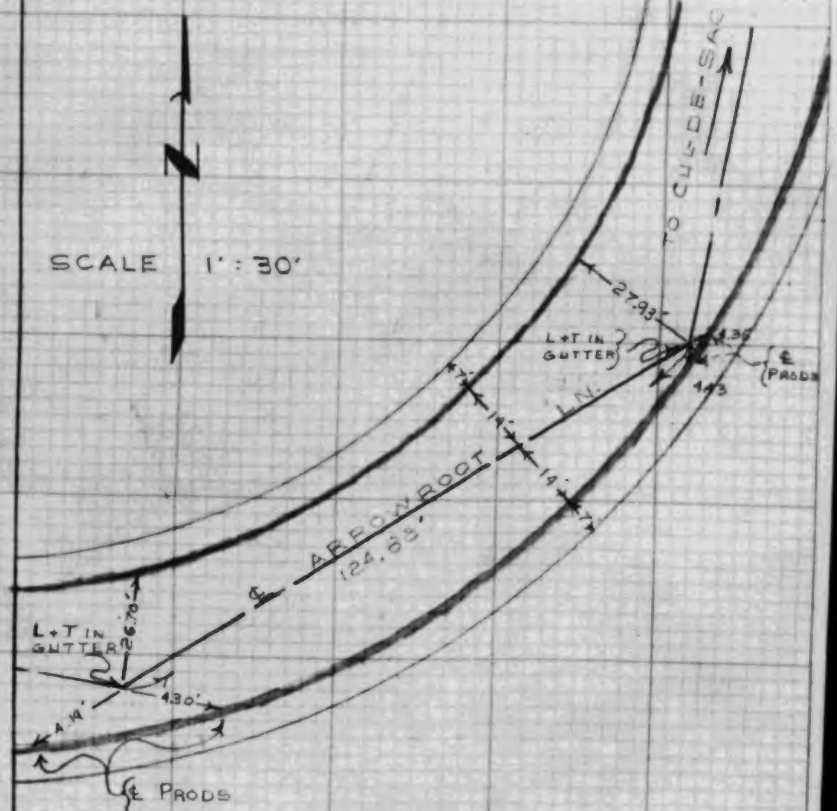
NOTE:  
ALL TIES LEAD  
AND TAG ON CURB

# TRACT 23434

## P.I.'S EAST END OF ARROWROOT

DATE: FEB. 1958

PARTY CH D Yost  
ENGINEERING  
SERVICE CO. P.



NOTE:  
ALL TIES LEAD  
AND TAG IN CURB



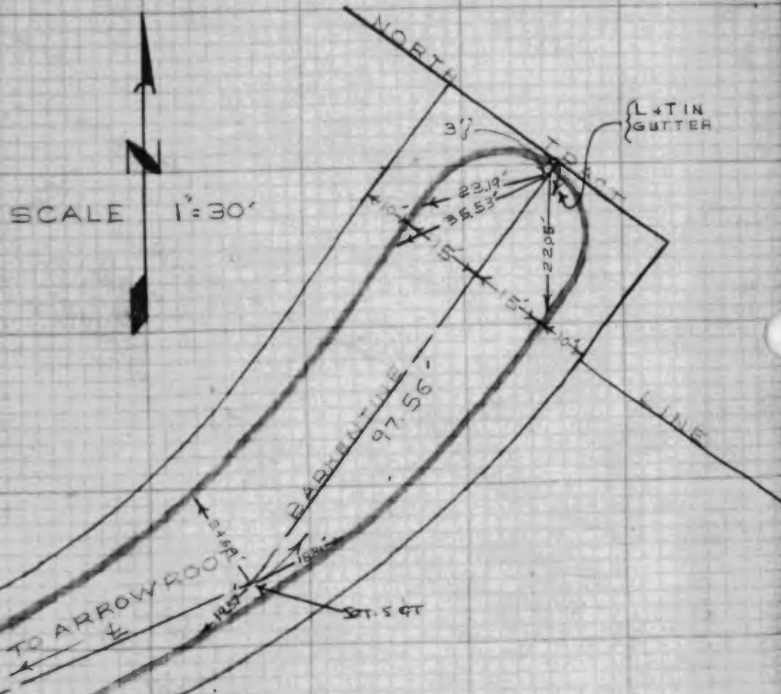
W527/B-5

# TRACT 23434

NORTH END BARKENTINE

DATE: FEB 1958

PARTY CH: D. YOGT  
ENGINEERING  
SERVICE CORP.



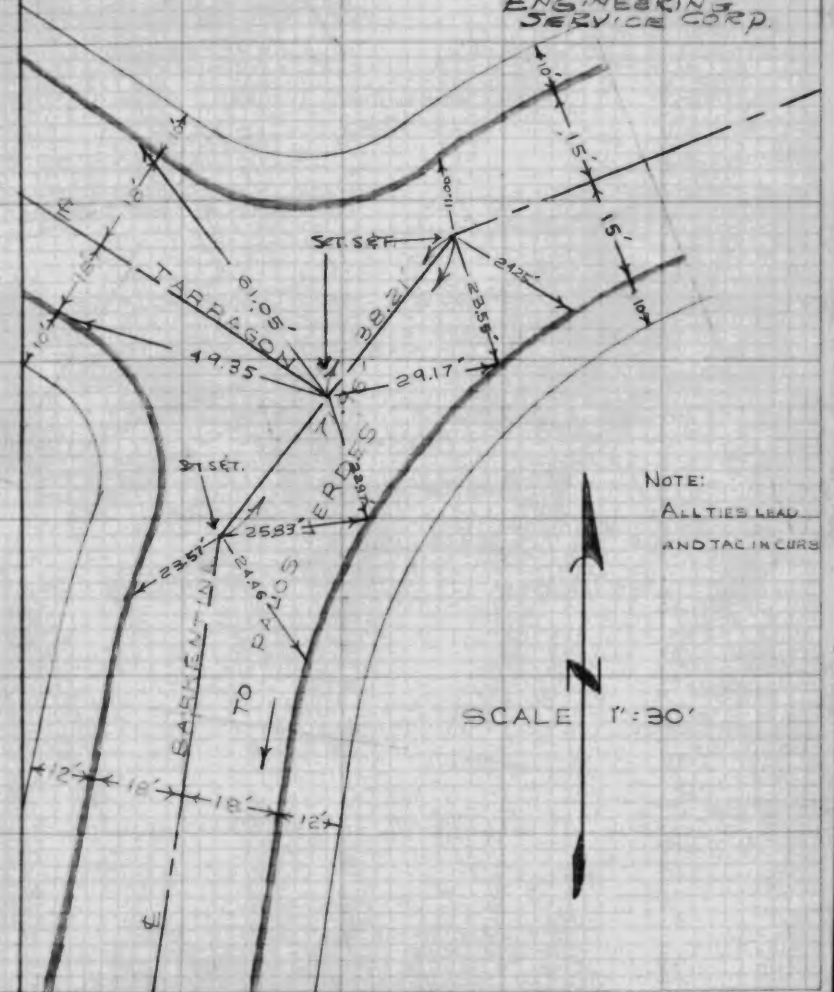
NOTE:  
ALL TIES LEAD  
AND TAC IN CURB

# TRACT 23434

BARKENTINE AND TARRAGON

DATE: FEB 1958

PARTY CH: D. YOGT  
ENGINEERING  
SERVICE CORP.



NOTE:  
ALL TIES LEAD  
AND TAC IN CURB

SCALE 1"=30'

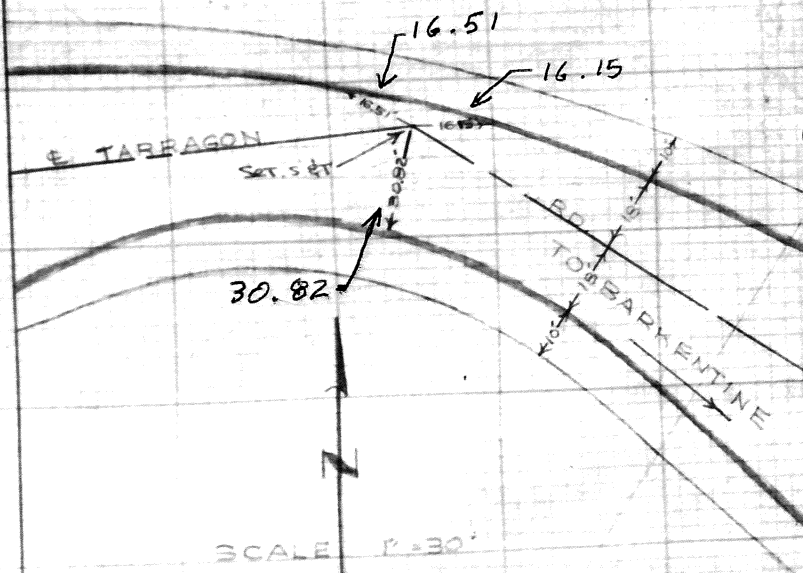
# TRACT 23434

P.I. ON TARRAGON RD.

DATE: FEB. 1958

PARTY CH: D. VOST  
ENGINEERING  
SERVICE CORP.

Note:  
ALL TIES ARE  
SURE-SET TACS

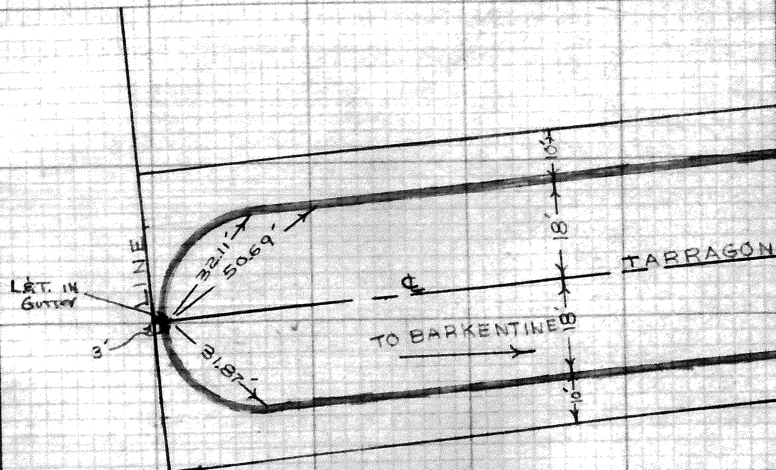


# TRACT 23434

WEST END OF TARRAGON RD

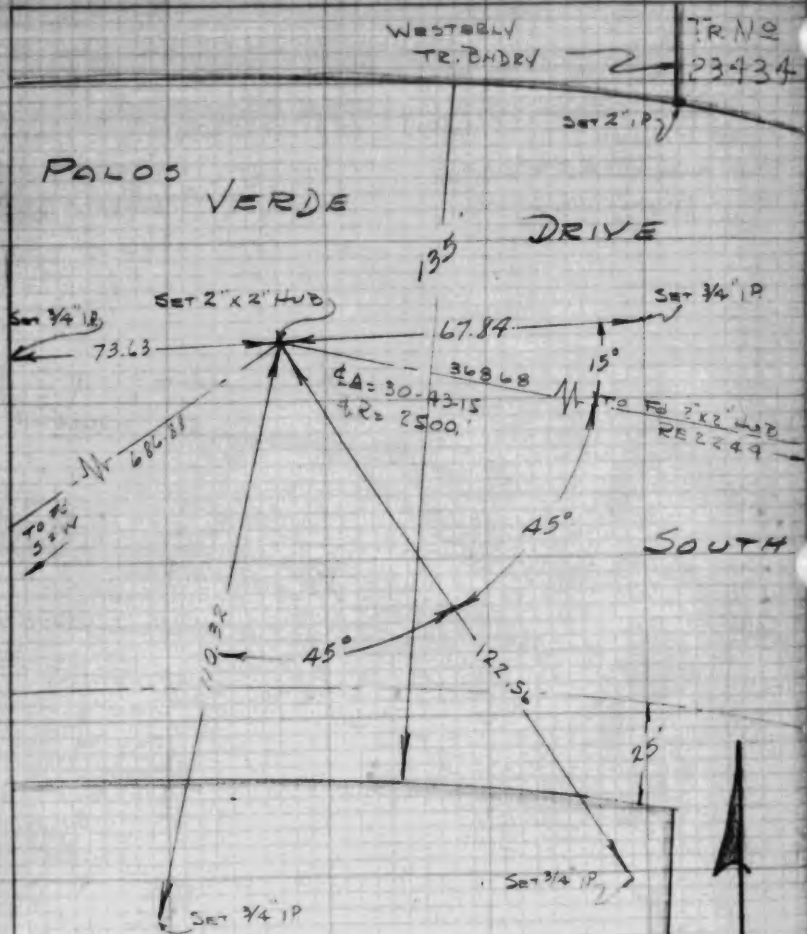
DATE: FEB. 1958

PARTY CH: D. VOST  
ENGINEERING  
SERVICE CORP.



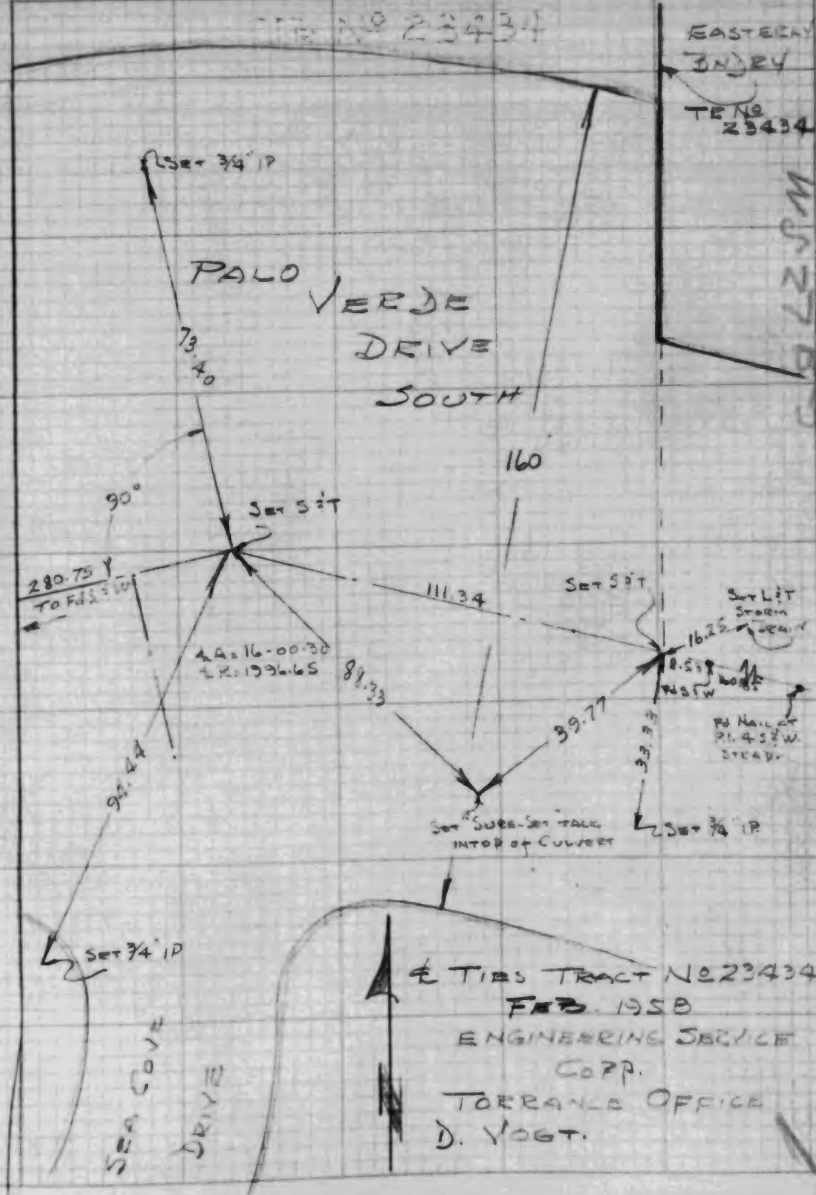
Note:  
ALL TIES ARE  
SURE-SET TACS

SCALE 1" = 30'



ETIES TRACT NO 23434  
FEB 1958

ENGINEERING SERVICE CORP  
TORRANCE FIELD OFFICE  
D. VOGT



ETIES TRACT NO 23434  
FEB 1958

ENGINEERING SERVICE  
CORP.  
TORRANCE OFFICE  
D. VOGT.